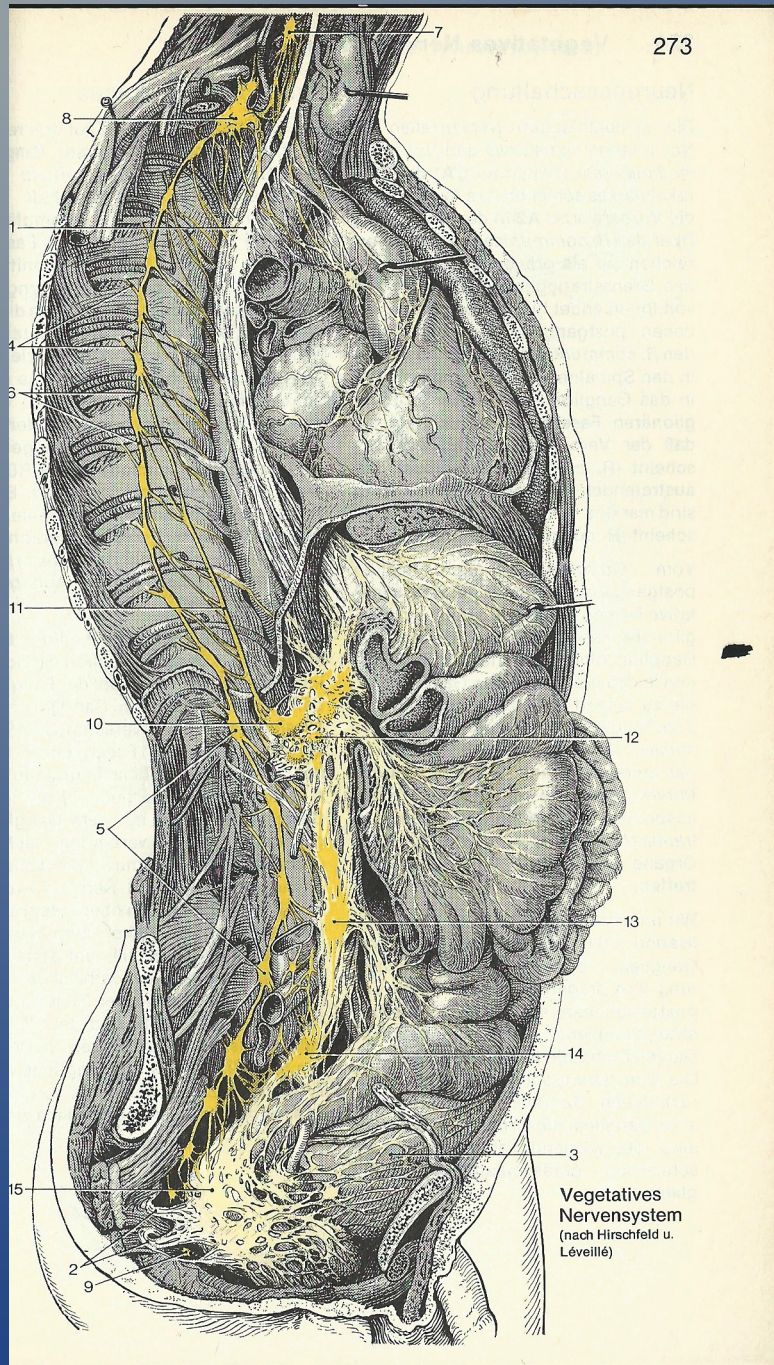


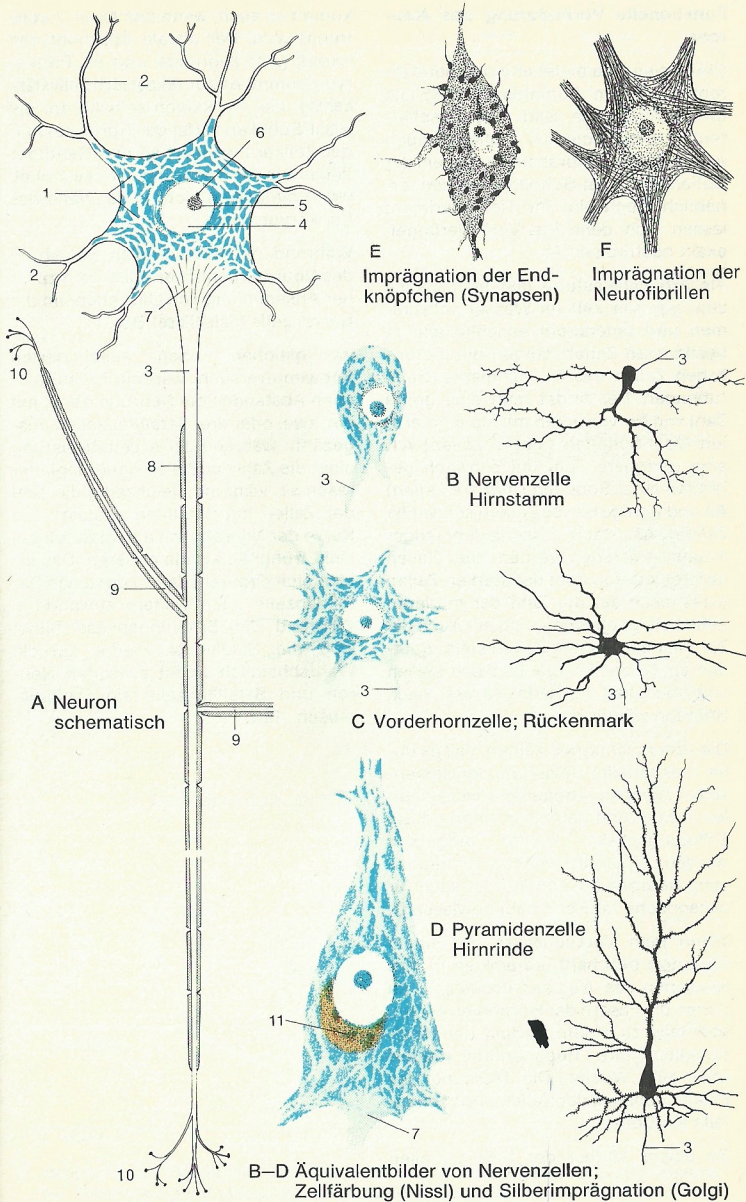
Der Mensch

Stoffwechsel

Die Nerven

Das vegetative Nervensystem

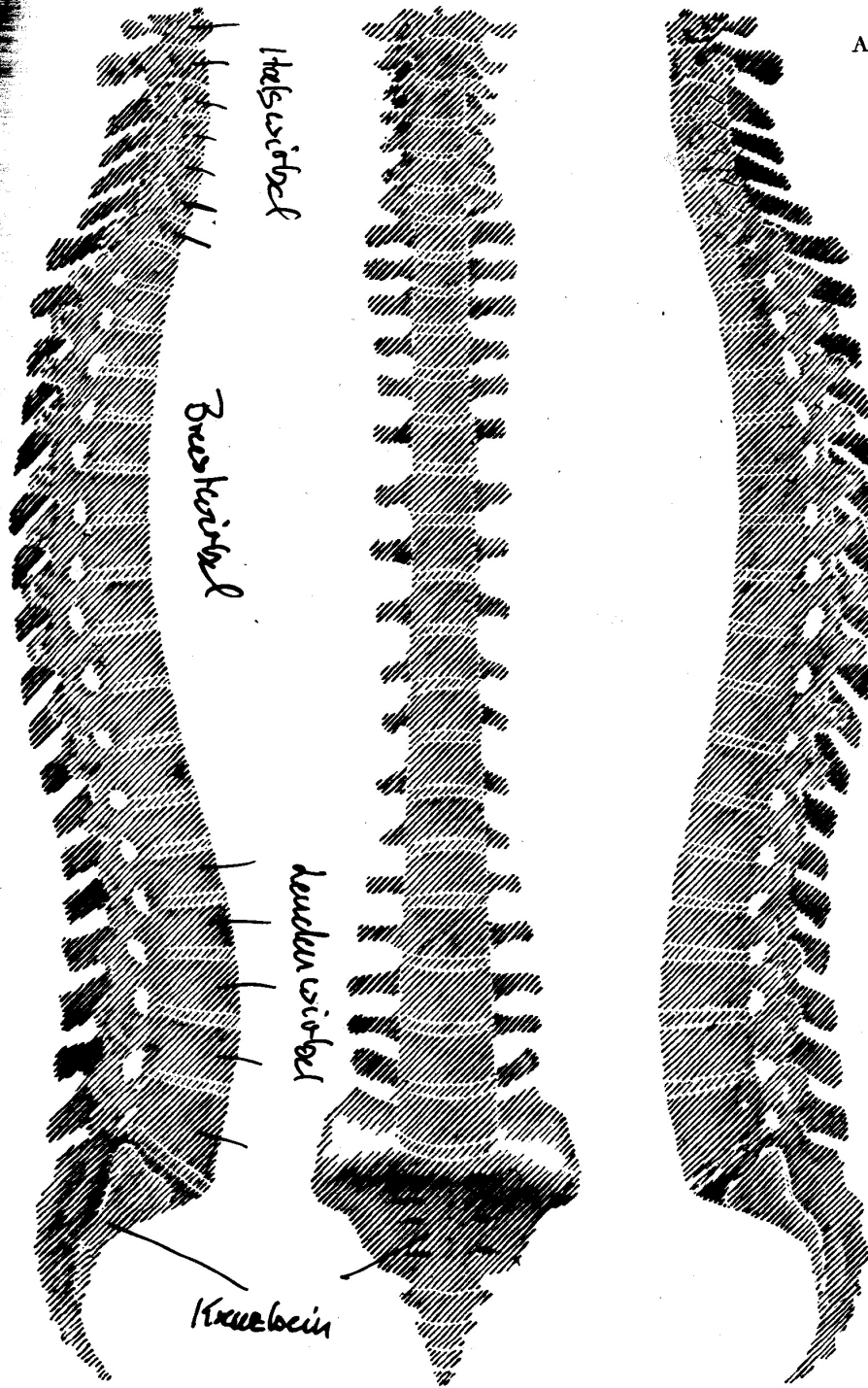




Die Nerven

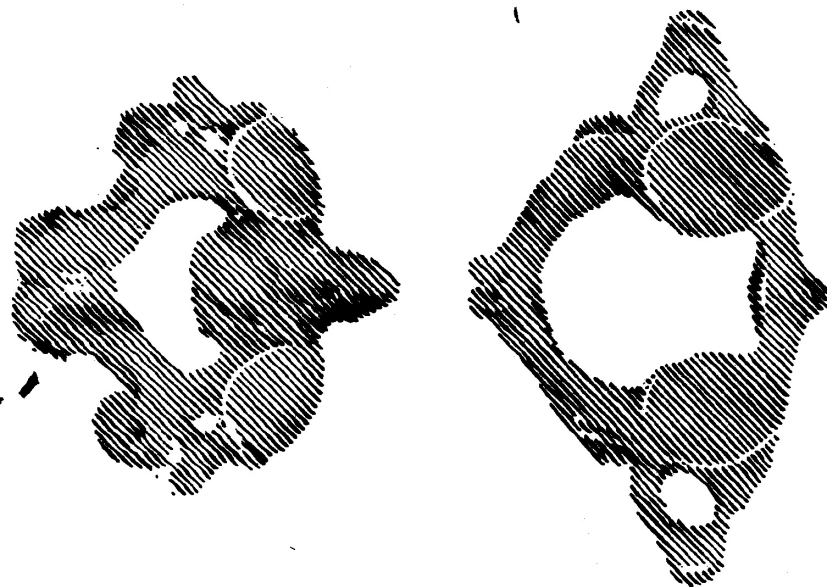
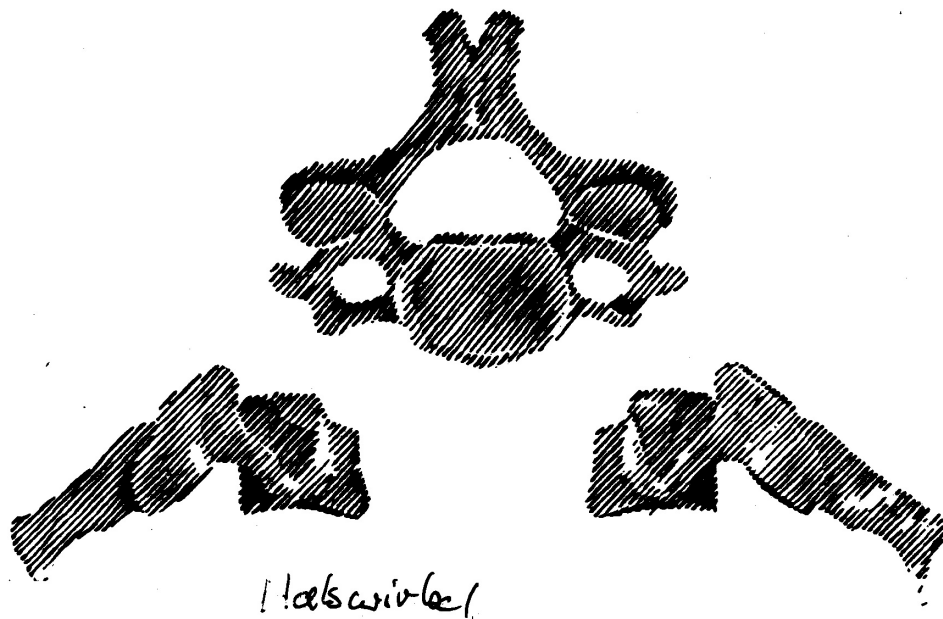
Die Nervenzelle

Abb. 3



Der Rumpf

Wirbelsäule

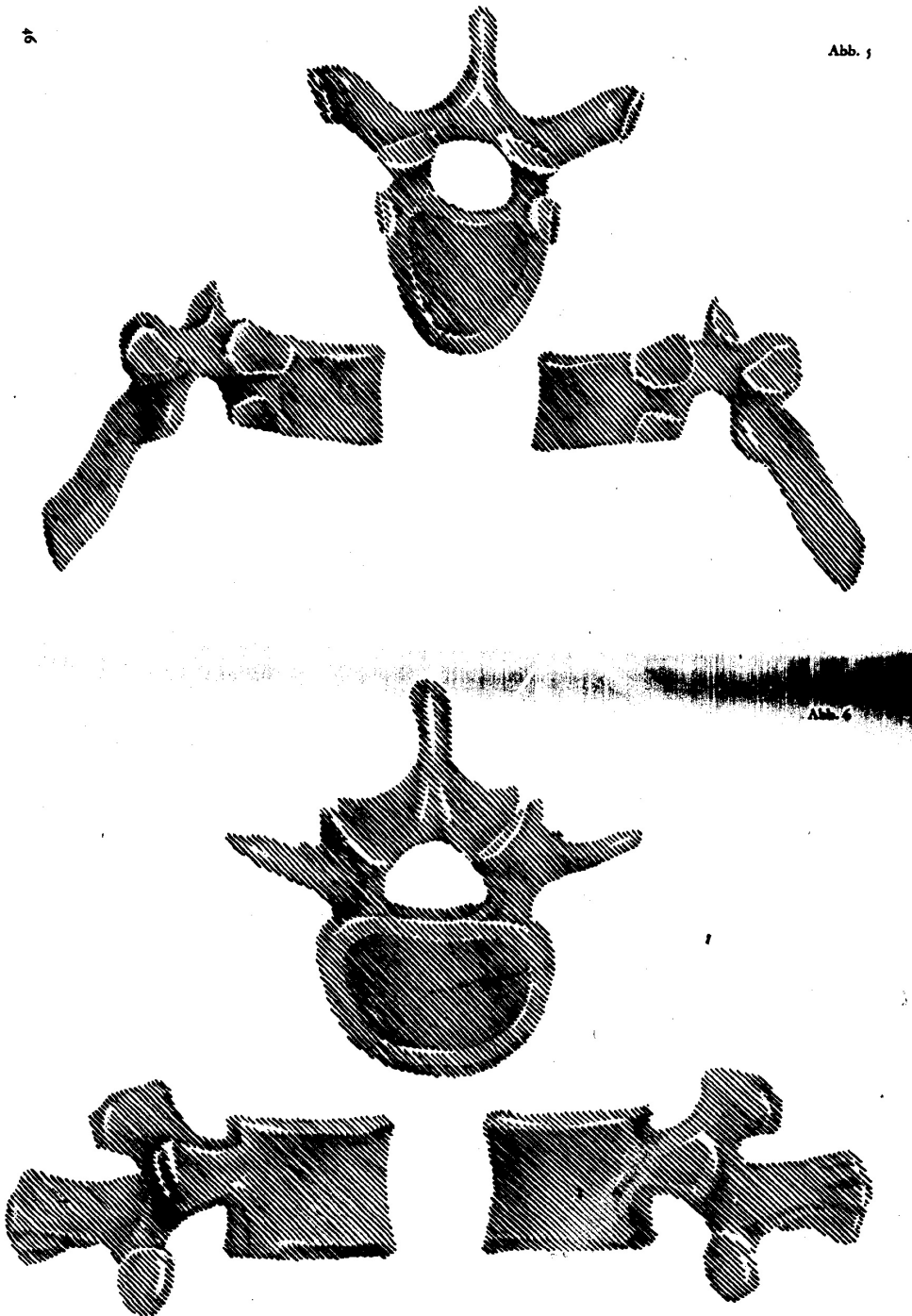


Der Rumpf

Die Halswirbel

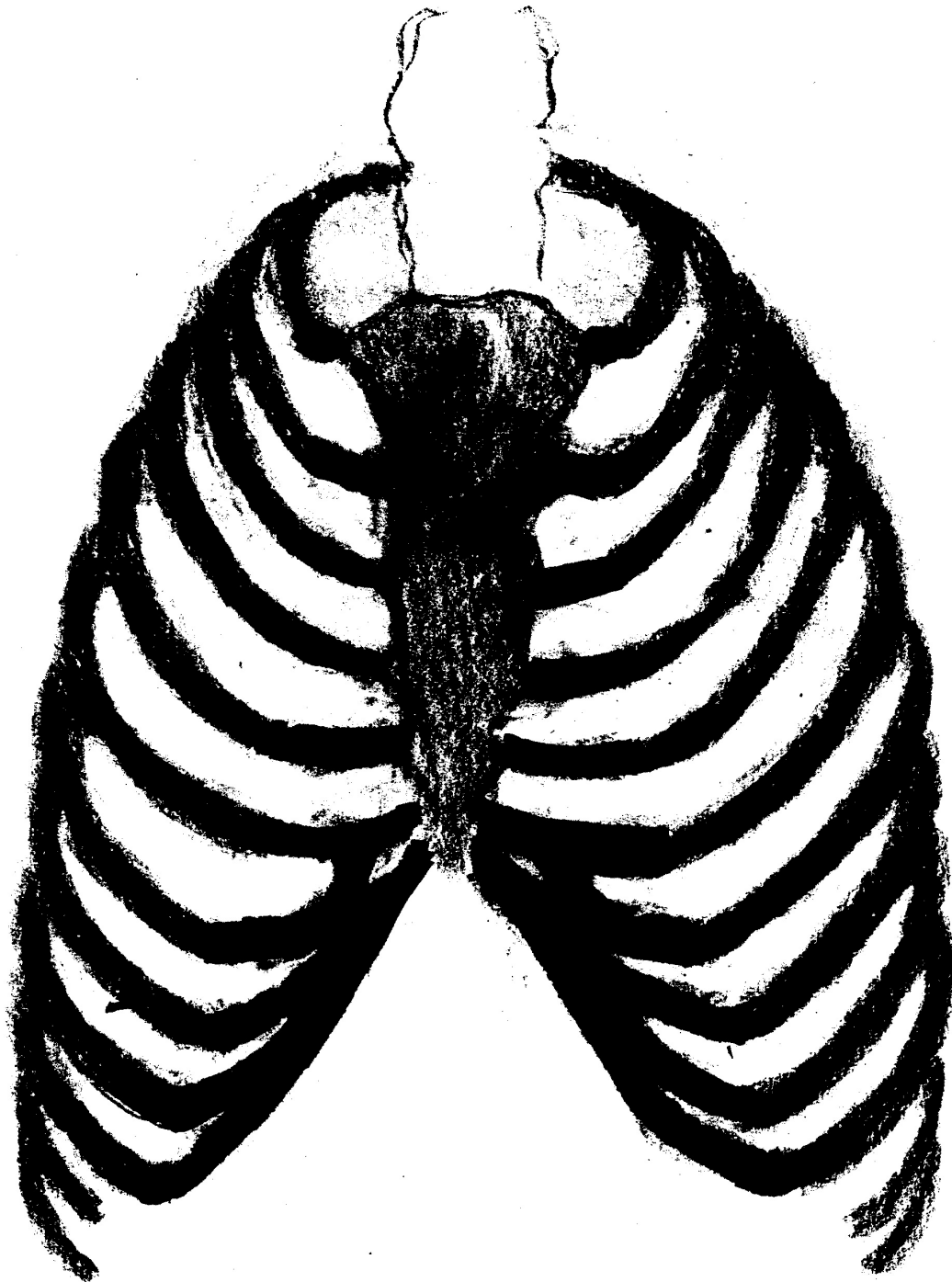
Der Rumpf

Die Brust- und
Lendenwirbel



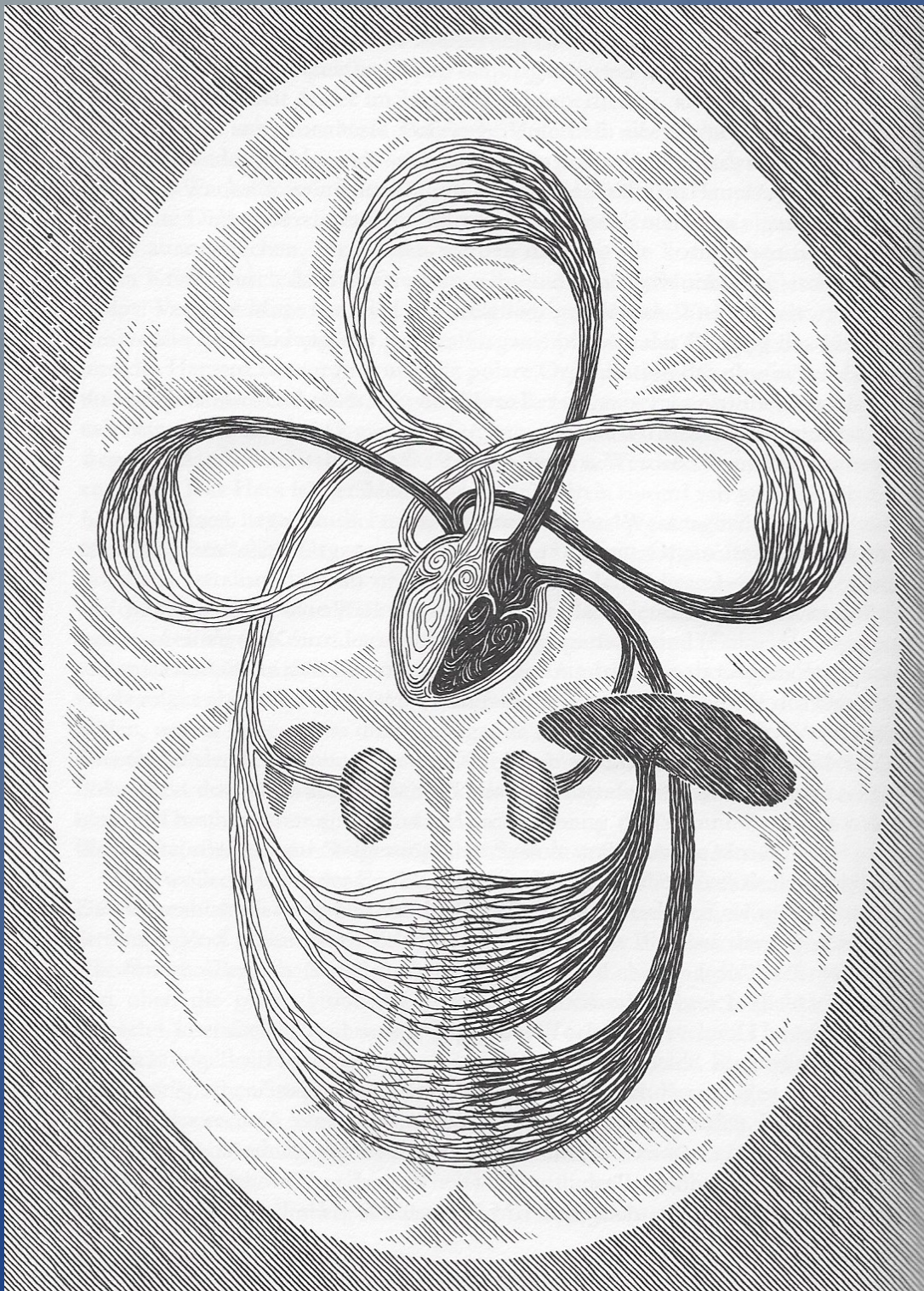
Der Rumpf

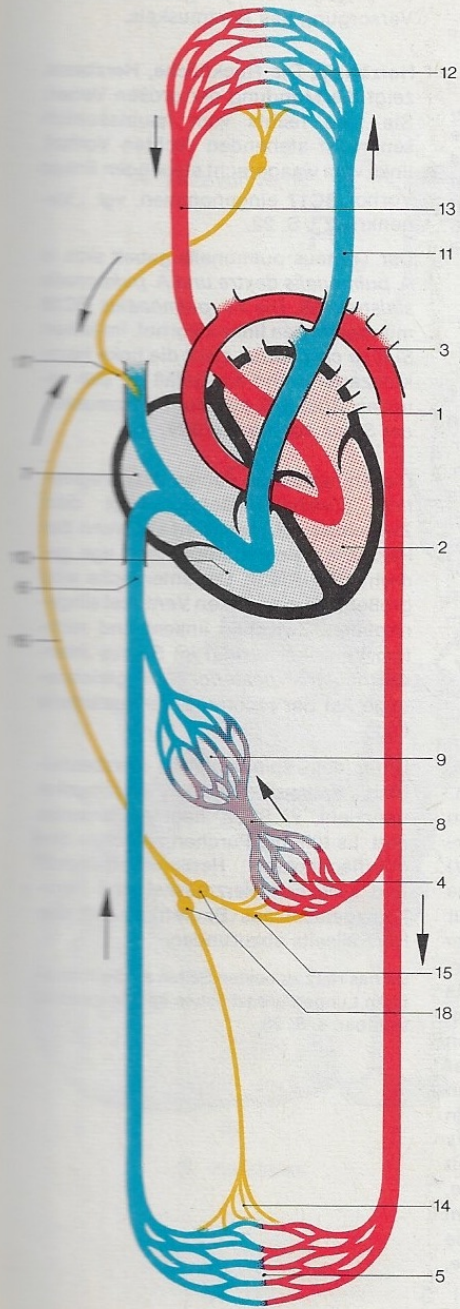
Die Rippen



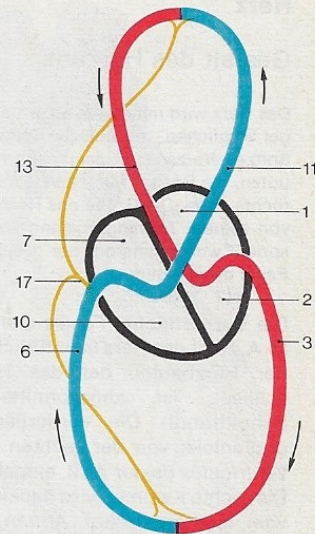
Das Herz

Kreisläufe





A Schema der Kreislauforgane



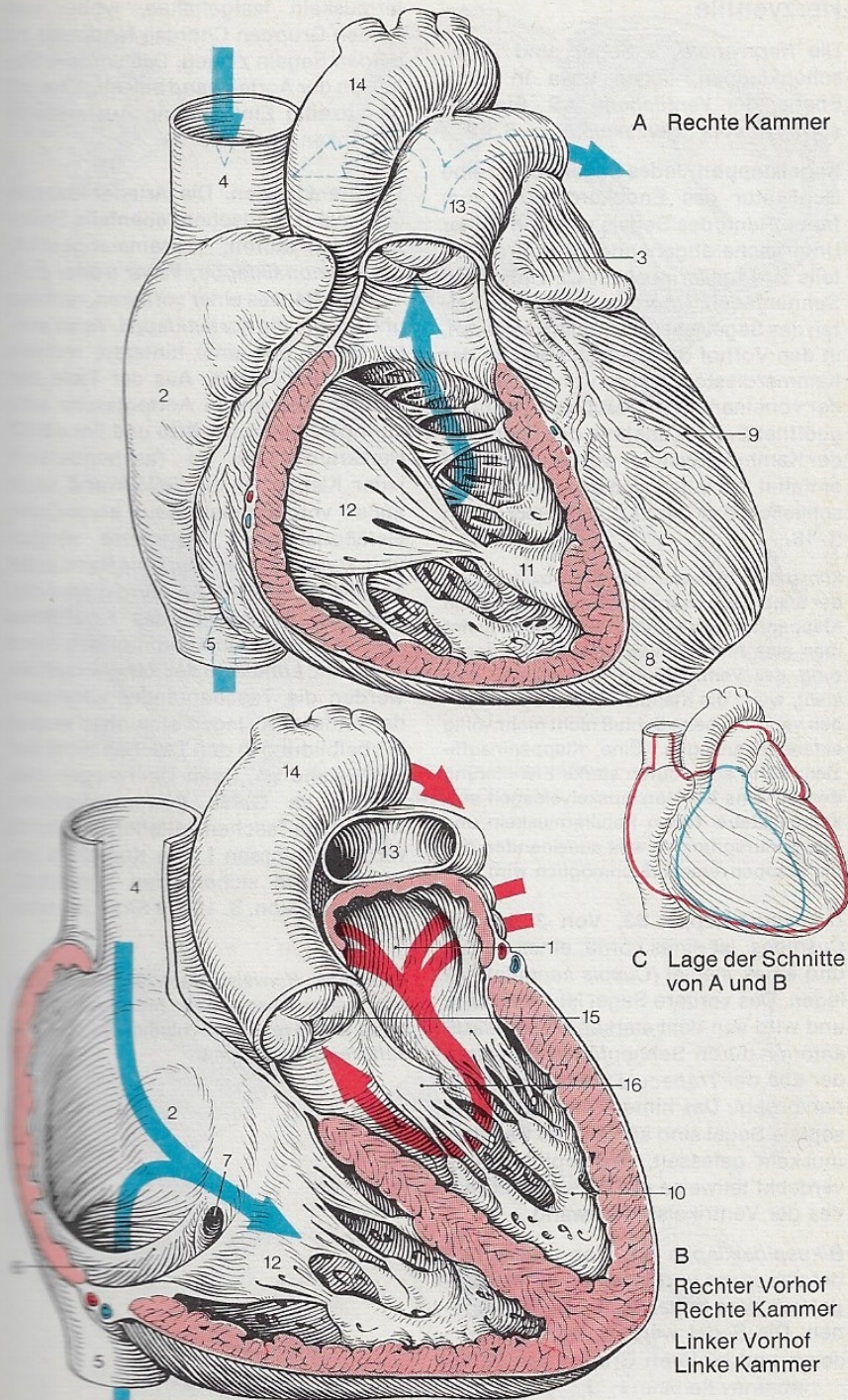
B Kleiner Kreislauf
Großer Kreislauf
(vereinfachtes Schema)

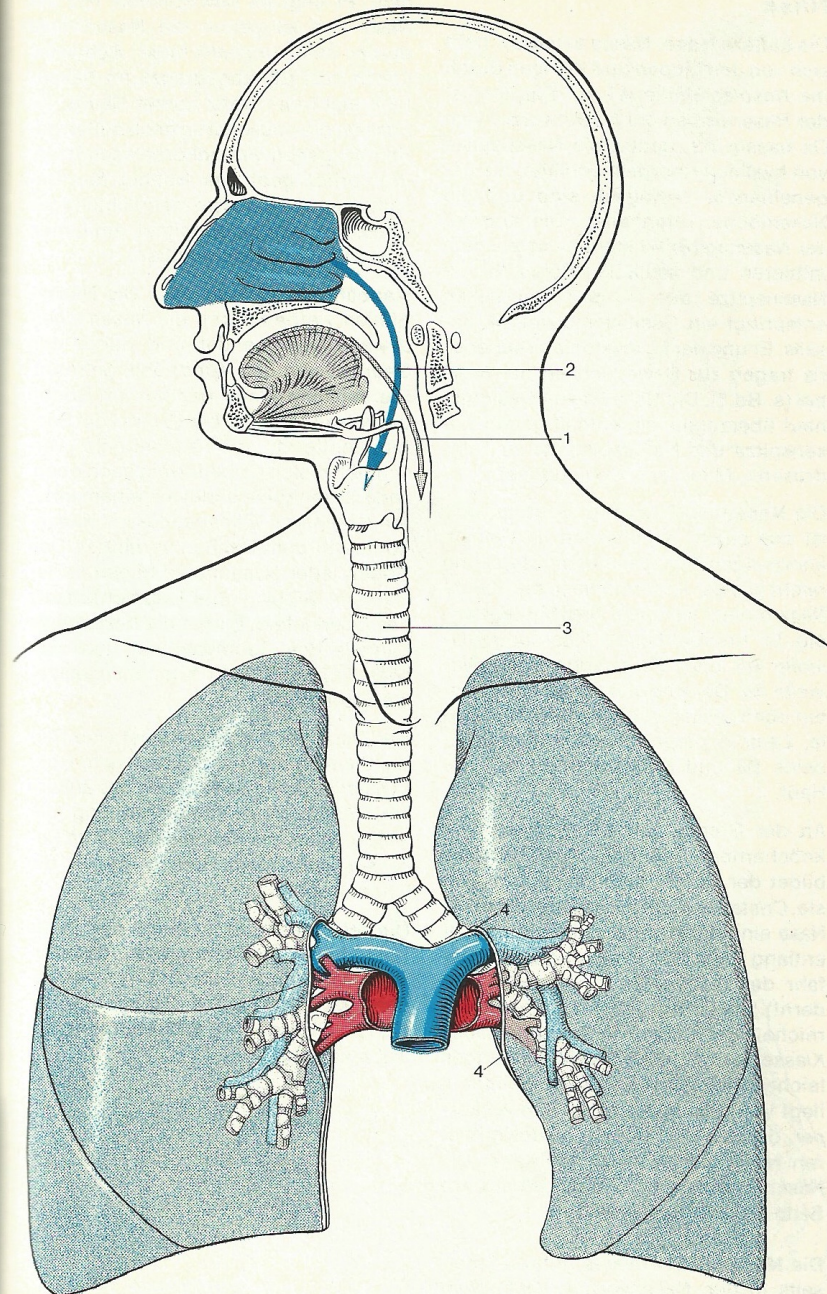
Herz

Blut & Lymphe

Herz

Die beiden Herzkammern





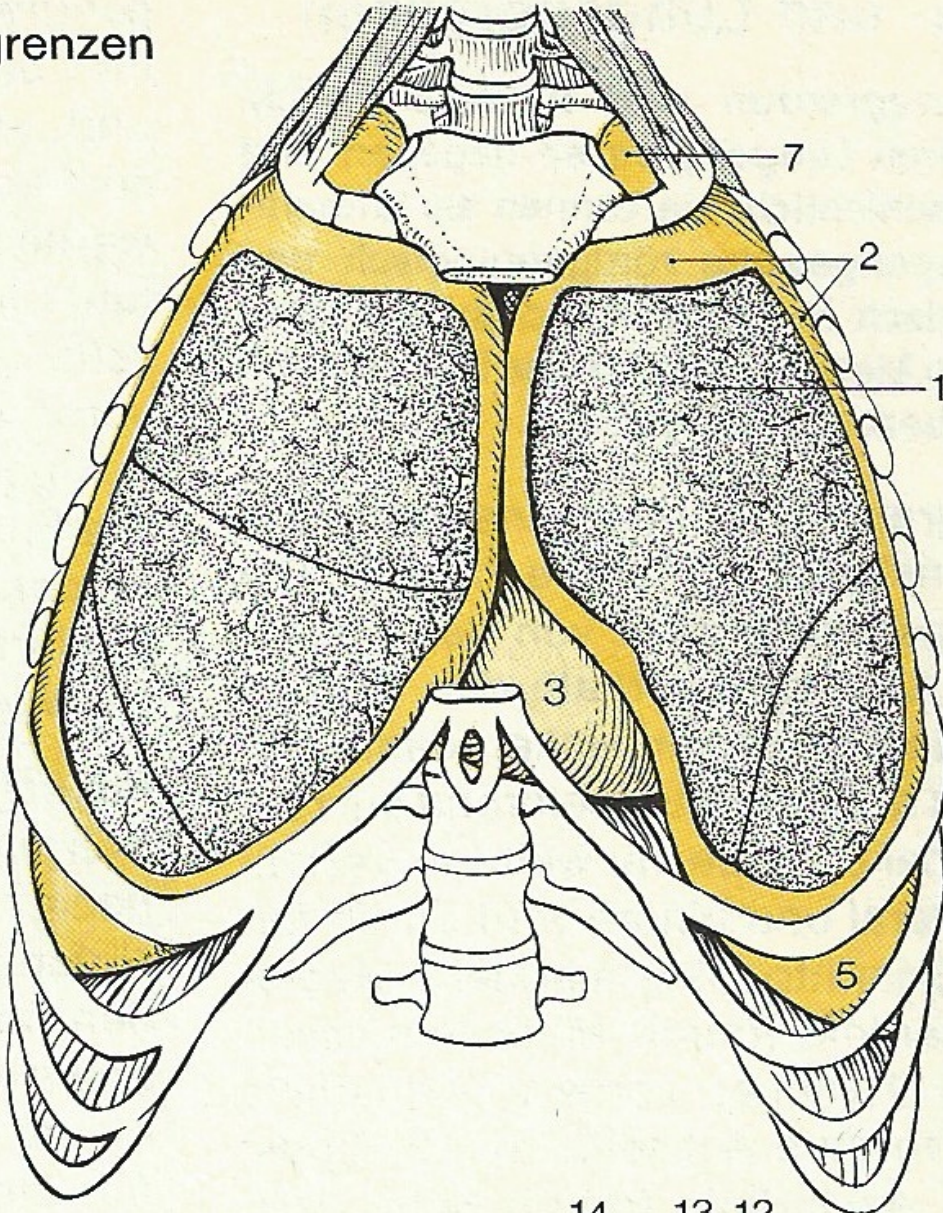
Atmungsorgane, Übersicht

Die Atmung

Lage der Atmungsorgane

Lungen

iragrenzen



14 13 12

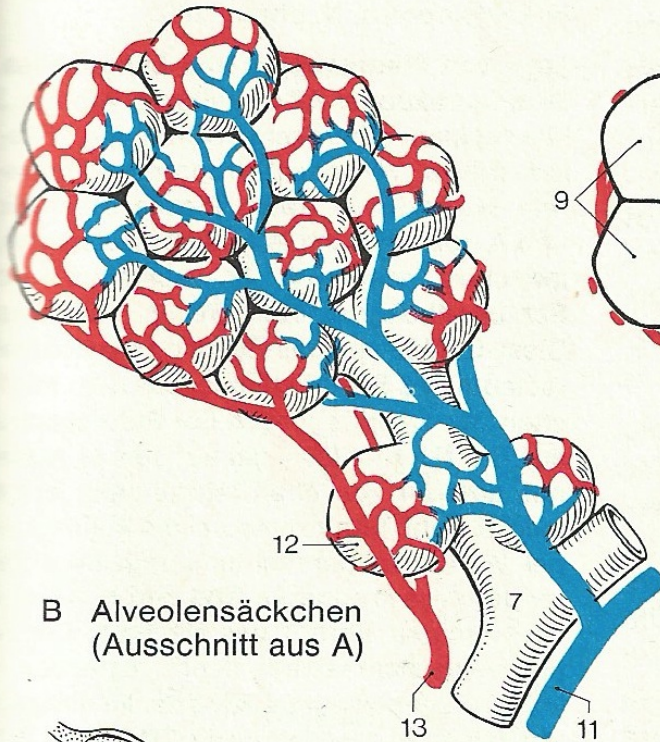
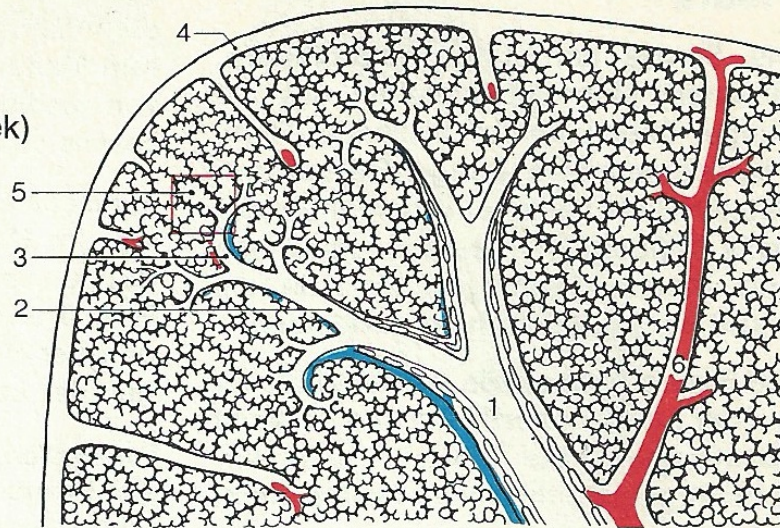
Die Atmung

Die Lunge

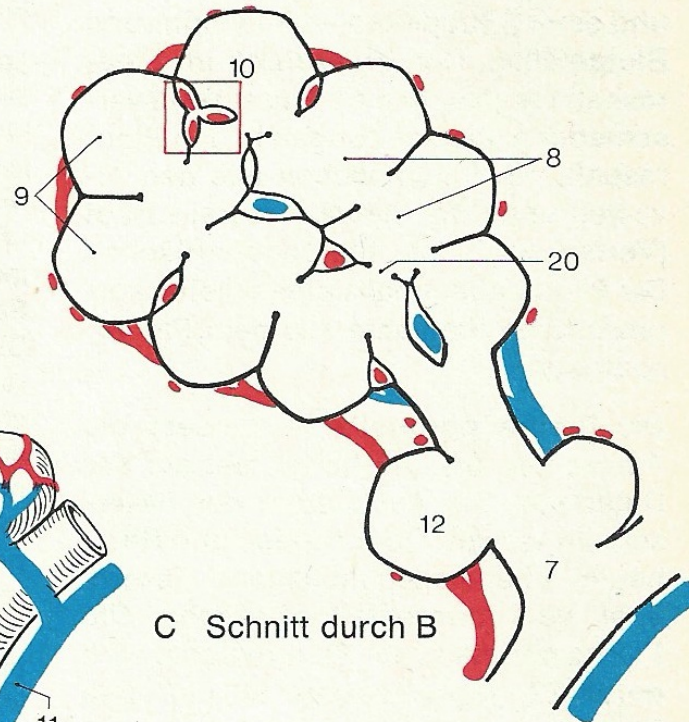
Die Atmung

Die Alveole

A Schnitt durch die Lunge
Aufteilung des Luft- und
Blutweges (nach v. Hayek)



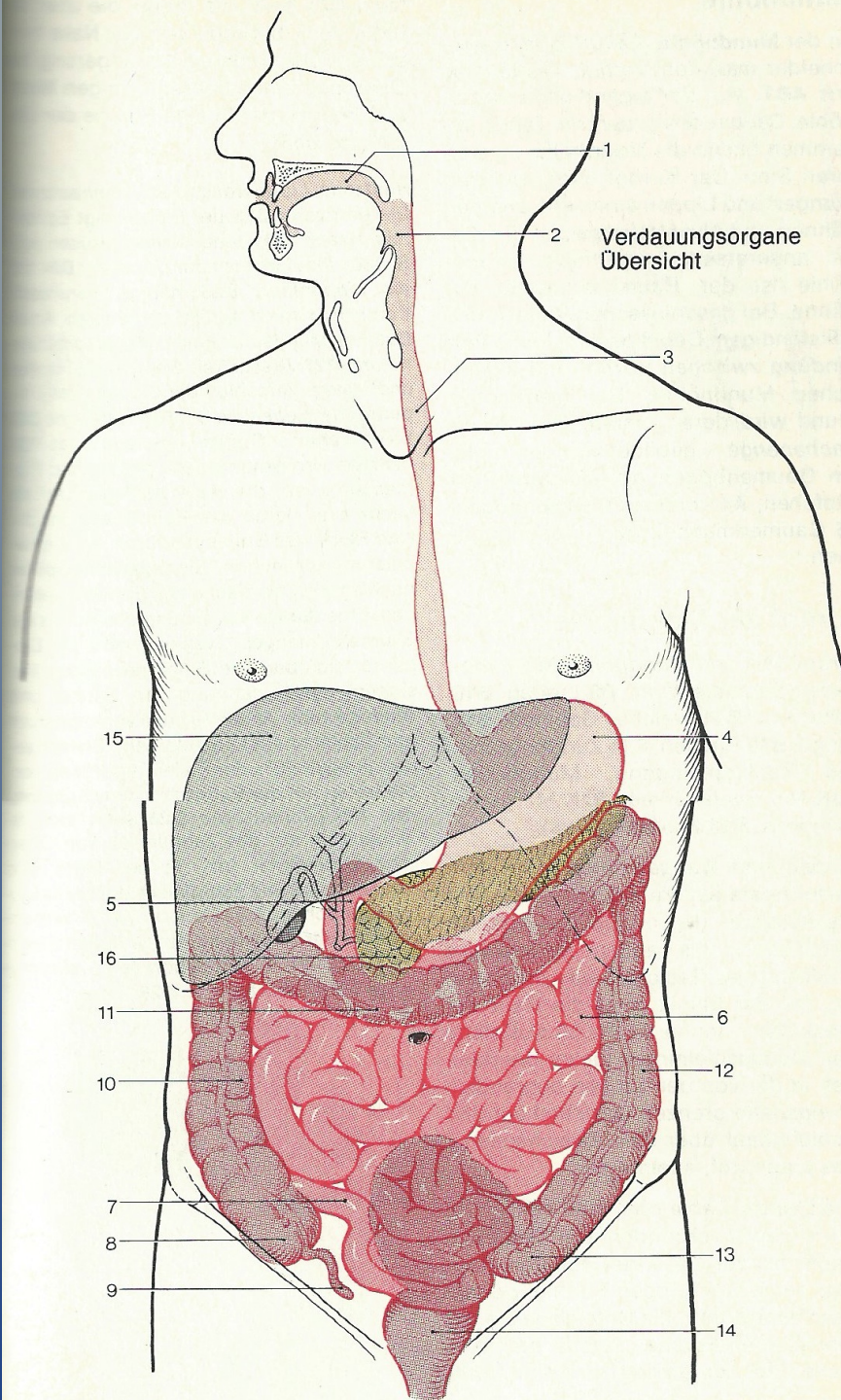
B Alveolensäckchen
(Ausschnitt aus A)



C Schnitt durch B

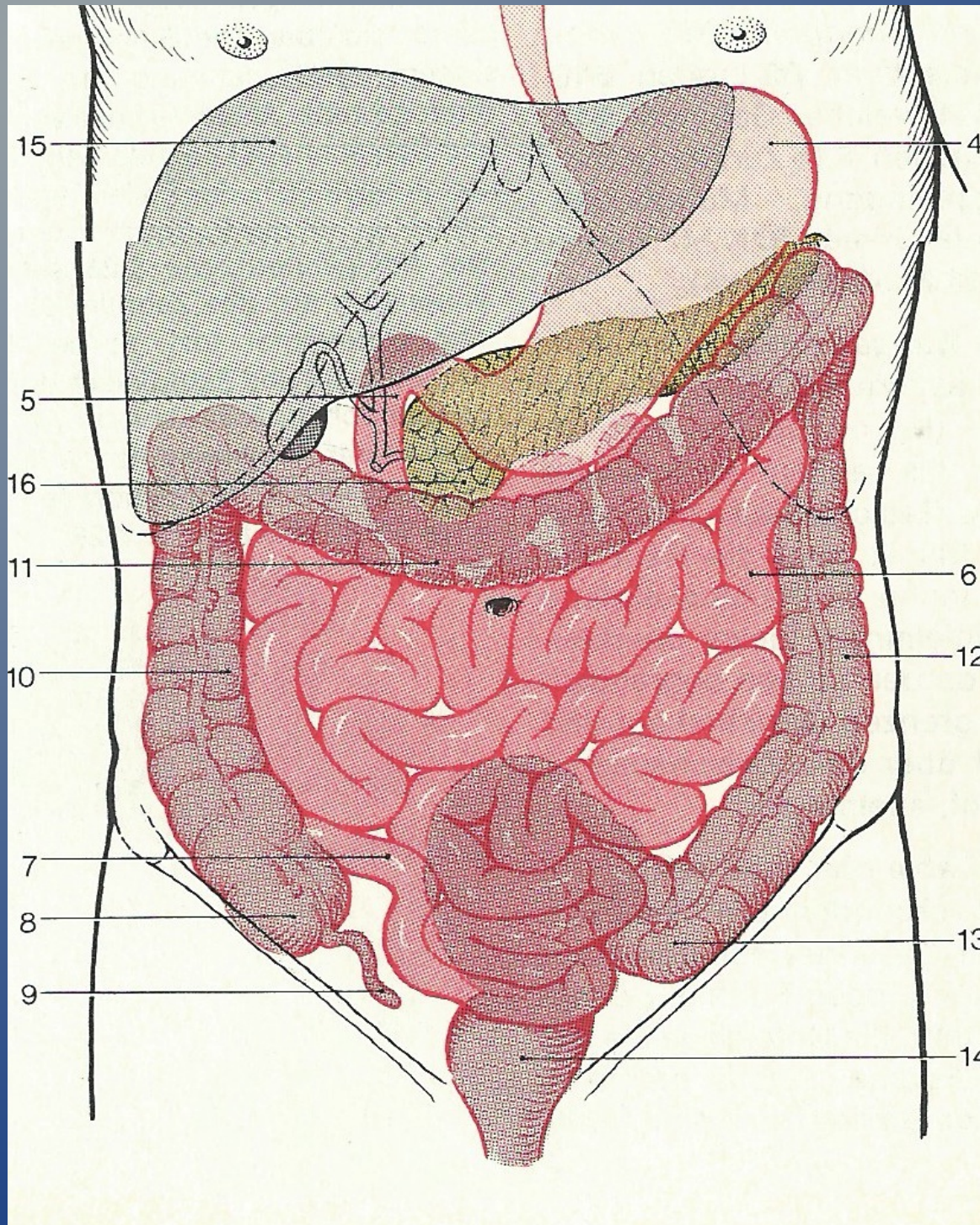
Die Verdauung

Die Lage der Verdauungsorgane



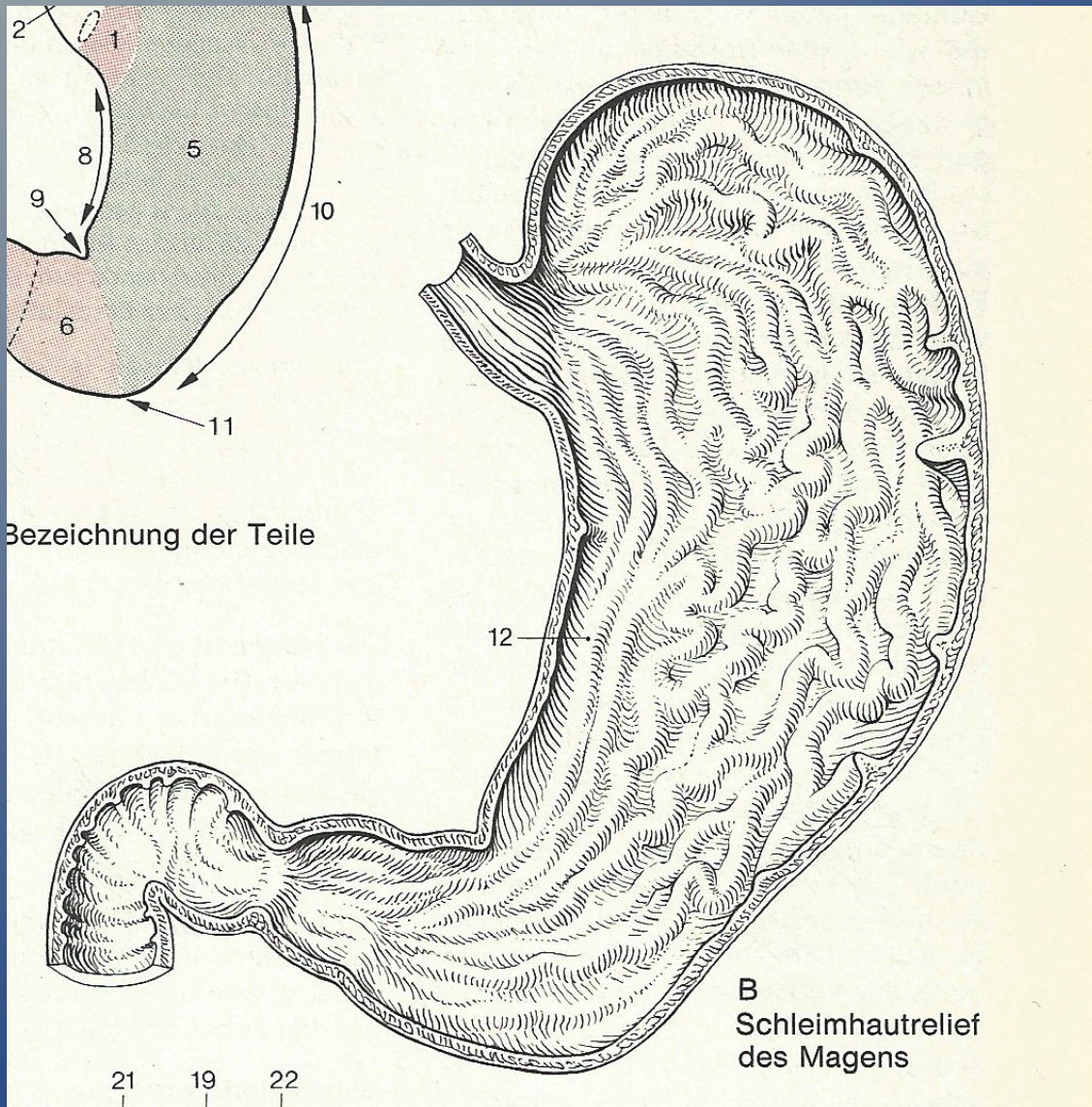
Die Verdauung

Die Bauchhöhle

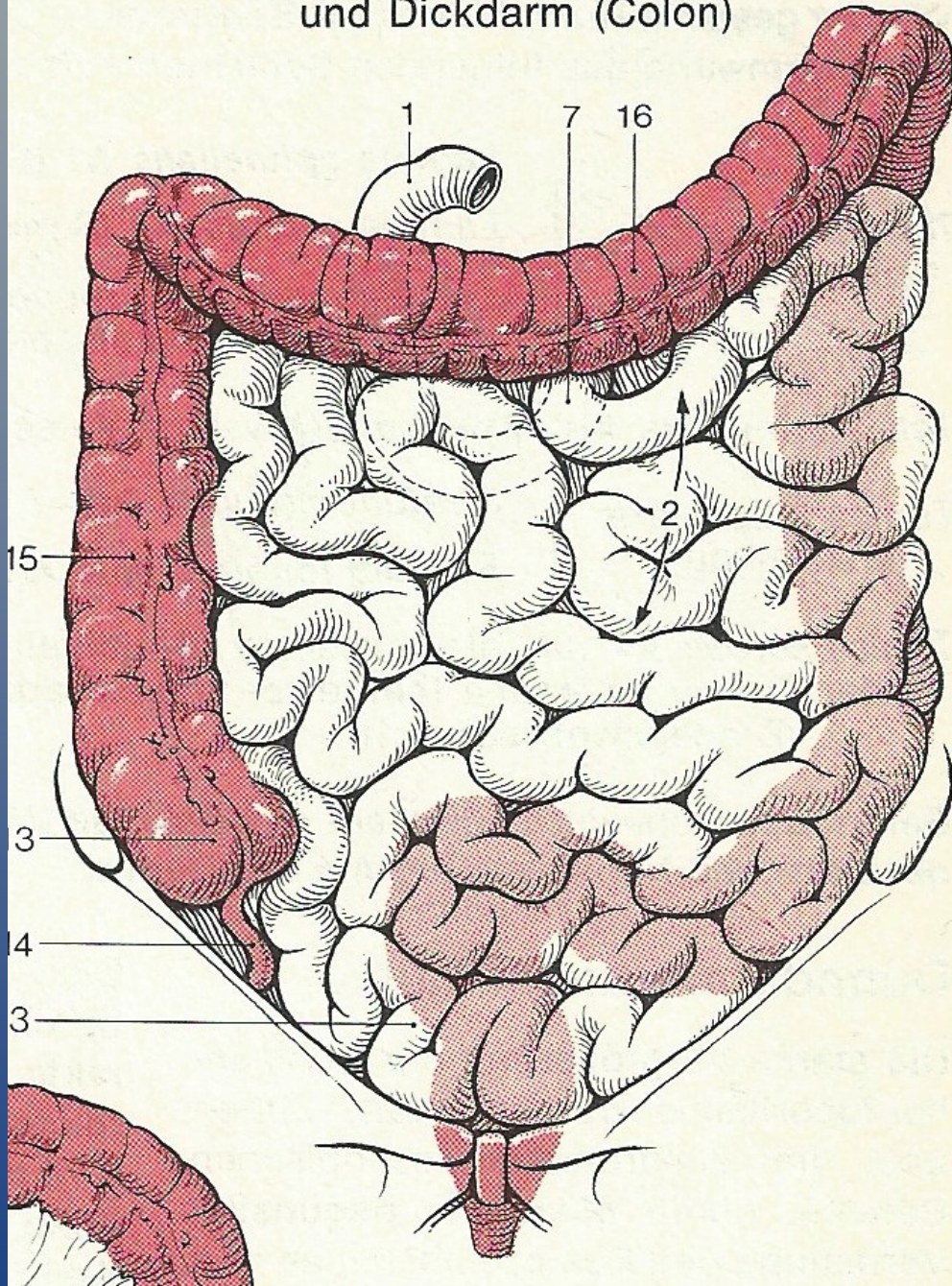


Die Verdauung

Der Magen



A Lage von Dünndarm
und Dickdarm (Colon)

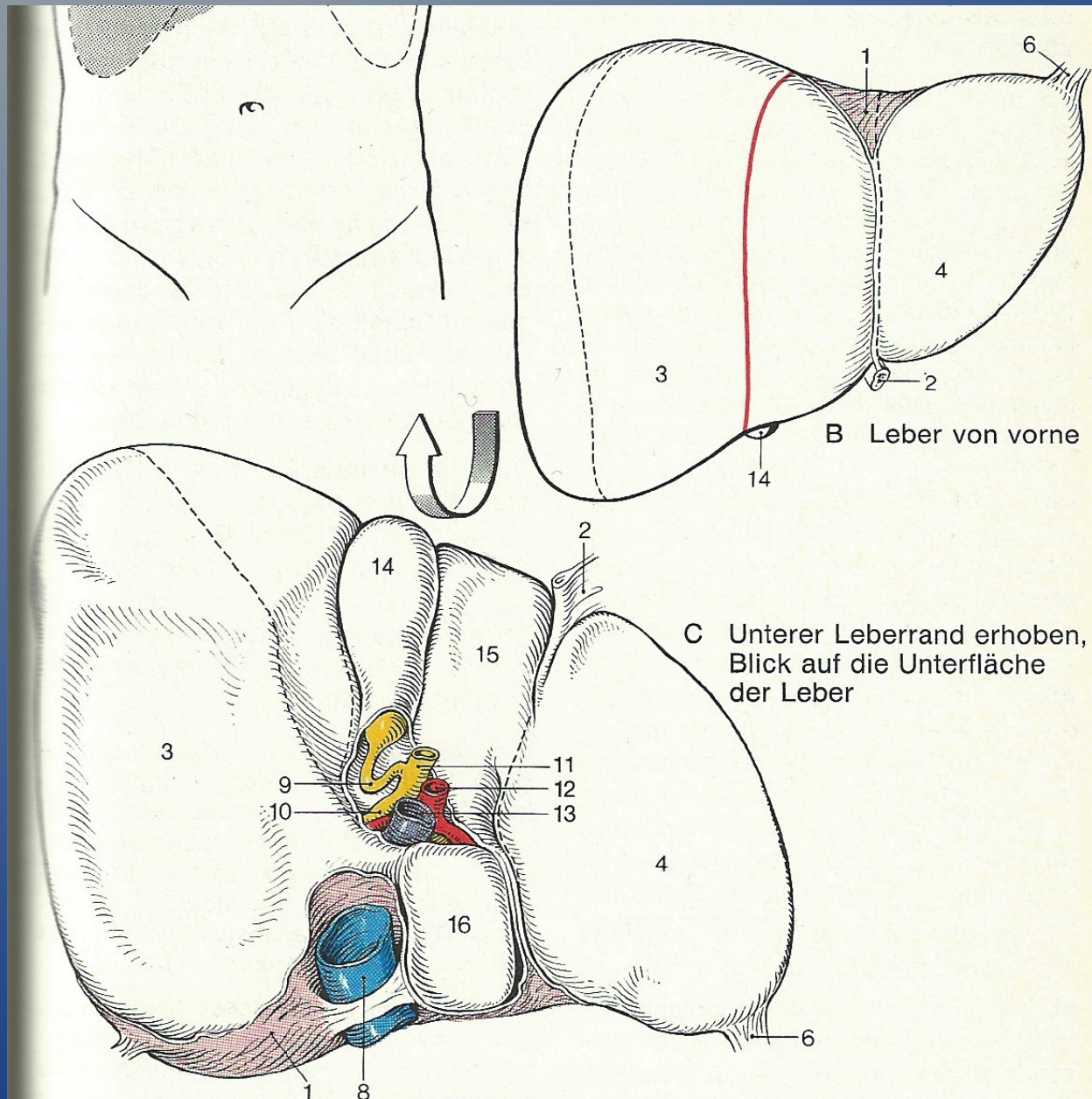


Die Verdauung

Der Darm

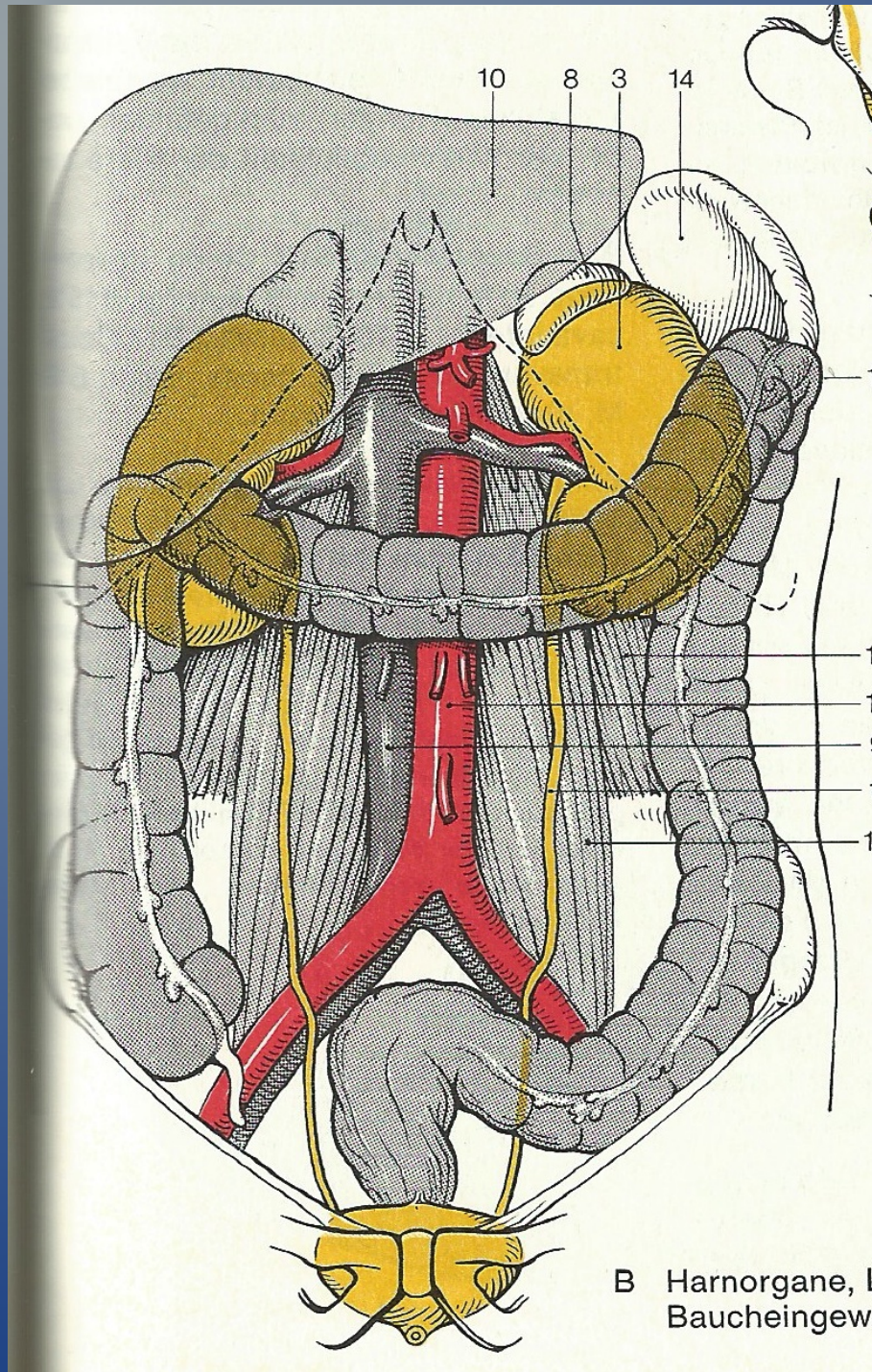
Die Verdauung

Die Leber



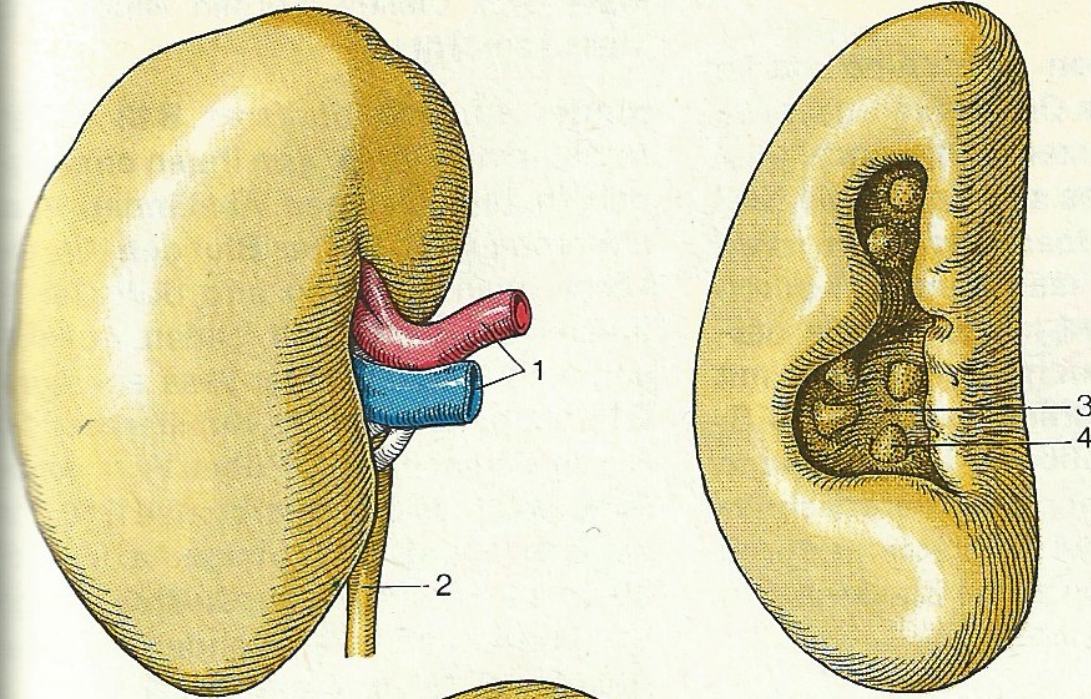
Die Verdauung

Die Lage der Nieren



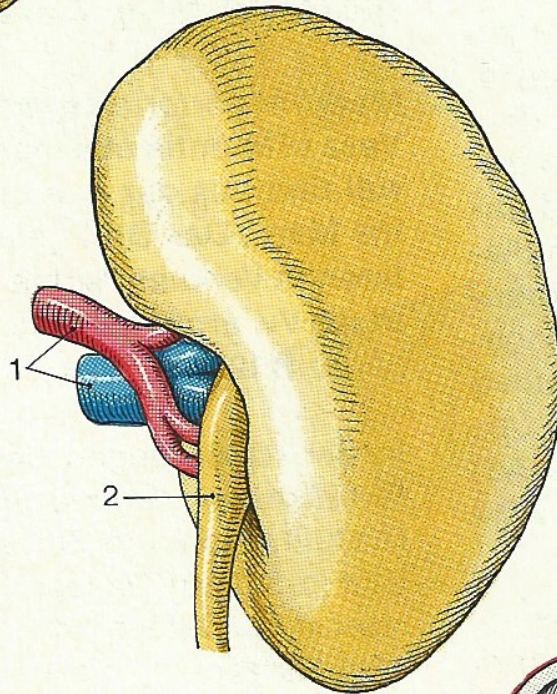
Die Verdauung

Die Nieren



A rechte Niere

von vorn
von medial
von hinten



Die Verdauung

Das
Nierenkörperchen

